

## 'PG Tips' from the County Training Team Manager



Four years ago (is it really that long?), a new method of delivering training in small 'bite size chunks' was introduced by Headquarters and embraced wholeheartedly by the GLMW Training Team. We said good-bye initially to whole weekend training sessions and delivered individual modular learning by a number of methods, including drop-in training sessions at evenings and weekends, workbooks, e-learning and one-to-one tutoring. The content of this modular learning was and still is excellent, but lacking was the fellowship and learning experience gained from mixing with other Leaders and sharing experiences on a weekend-training course.

Weekend courses', combining up to six modules, have been re-introduced and over the past two years numbers attending training have more than doubled! So much so that Courses up until September are nearing capacity! Flexibility is the key to successful training, so weekend courses, together with workbooks, e-learning and one-to-one tutoring is delivering something for everyone.

We also feel we have got First Response Training right by offering and delivering six one-day courses and three two-hour refresher courses each year. That's an annual availability for over two hundred Leaders delivered by just three First Response Teams.

Having given Training a-pat-on-the-back for getting things right for our County, we shouldn't forget the training team members and their personal achievements.

Very many congratulations to Terry Kingham our Director of Adult Support, Trevor Golder, Local Training Manager for the Hounslow Borough, Rob White, Facilitator and Jackie Westley, Feltham Scout Fellowship Catering Team on receiving Silver Acorn Awards.

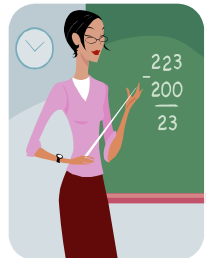
Congratulations also to the fourteen members of various Scout Fellowship catering teams who undertook and passed with flying colours the Chartered Institute of Environmental Health (CIEH) Level 2 Award in Food Safety. Your culinary expertise on training courses is very much appreciated by participants and trainers alike.

Very well done also to Maxcine Hill, Facilitator, who ran and finished the London Marathon in April. Maxcine was wearing a Scout sign on her back. What a feat (if you'll excuse the pun).

Good quality, enjoyable training experiences continue to be delivered in GLMW thanks to the dedication, expertise and professionalism of the County Training Team of Directors, Presenters, Facilitators, Technical Supporters, the Scout Fellowship Caterers and Quartermaster that is my privilege to manage.

The Training Programme for the remainder of 2008/2009 is published elsewhere in this edition of GLMW News or on [www.glmwscouts.org.uk/training](http://www.glmwscouts.org.uk/training) or by asking your Local Training Manager, Administrator or Training Adviser. We look forward to seeing you on a course soon.

PAULINE GREGORY - County Training Team Manager



**FREE BOATING.** Thanks to Phil Power (ACC.A) our County Executive has agreed to pay for all boating at Bury Lake when using our County Boats at Bury Lake this season. There will however still be a charge as set by Bury Lake Young Mariners for the use of their boats and for the Canadian Canoes. Normal Licence fees still apply if using boats on the Grand Union Canal